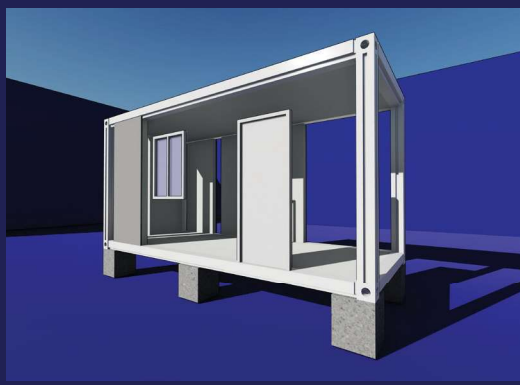
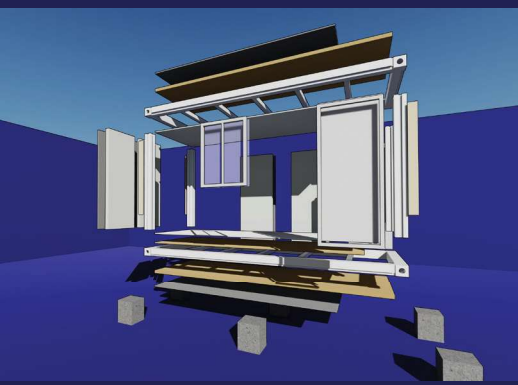




MEETING THE HIGH DEMANDS OF THE OIL, GAS, CHEMICAL
AND MINING INDUSTRIES WITH FIRE RATED MODULAR UNITS



Qatar Gas NFE & NFS Projects

Qatar Gas

The North Field East (NFE) and the North Field South (NFS) Projects are an expansion of the North Field, the world's largest single non-associated Natural gas field, offshore North East of Qatar. The two projects are expecting to see an expenditure of 50 billion US Dollars before finishing in 2027.



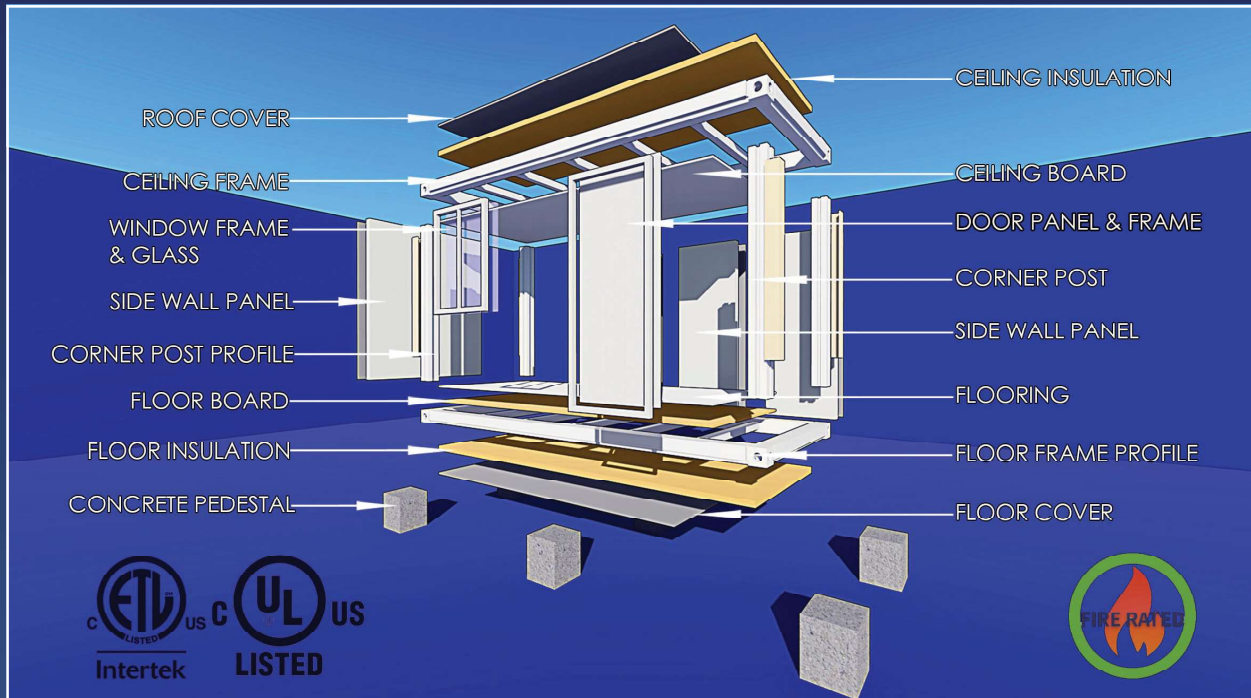
Ark Prefab Modular units were chosen by many of the contractors for the Qatar Gas NFE & NFS projects for the following reasons:

- Fire rating compliance
- Arks Modular units are certified by INTERTEK USA as one-hour resistance to fire.
- Approved by Qatar Gas.
- An efficient design and engineering service.
- Fast delivery.
- Product quality.
- Rapid and trouble free installation.
- Installation supervision.
- Client satisfaction.

Ark Prefab has successfully delivered more than 20,000 modular units to the NFE & NFS Project contractors which represents a substantial percentage of the accommodation requirements for the two projects. At the peak the two projects are expected to accommodate more than a 150,000 man workforce.



Installation & Assembly



Ark Prefab's Flat pack system has been designed with the installation playing a prominent role leading to the main elements (floor & roof structure) being pre-assembled in the factory, leading to a RAPID installation. All modular buildings are delivered with detailed installation instructions and method statements.

Ark Prefab has built up a network of global installation partners who have the experience and the resources not only to erect the buildings but to manage and complete turnkey projects.

If the client chooses to undertake the installation themselves, help is on hand by one of Ark Prefab's Installation supervisors who will monitor the project from the production, delivery, installation, all way to the commissioning stage to ensure the installation is correct, trouble free and more importantly client satisfaction.

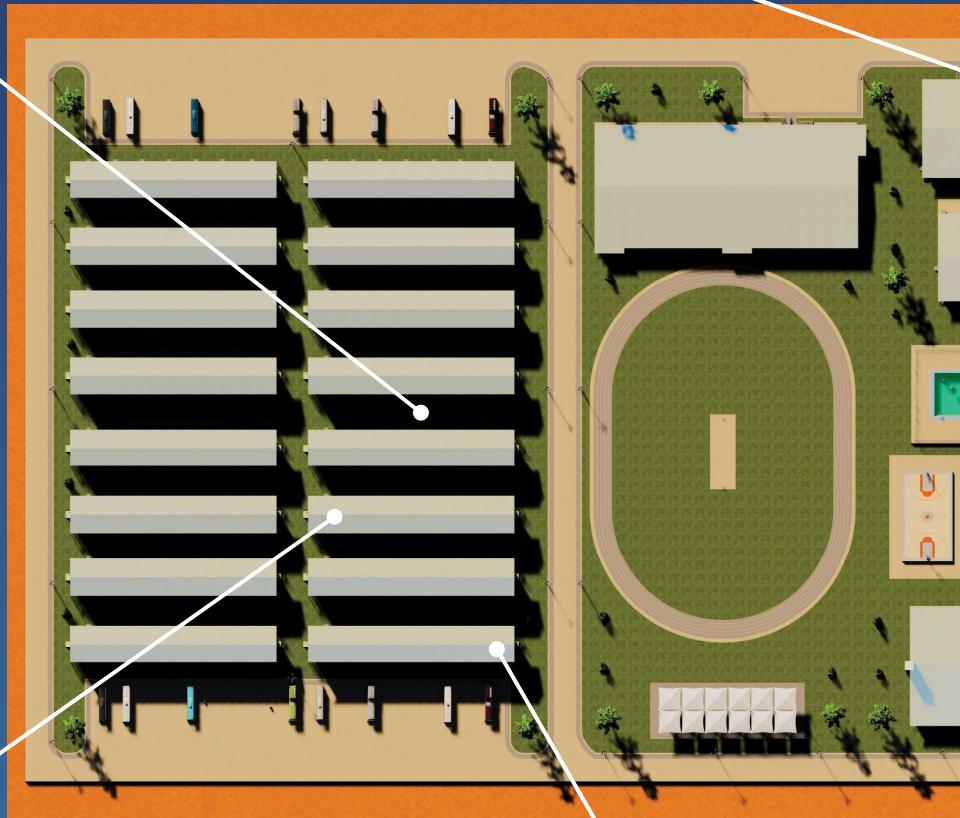


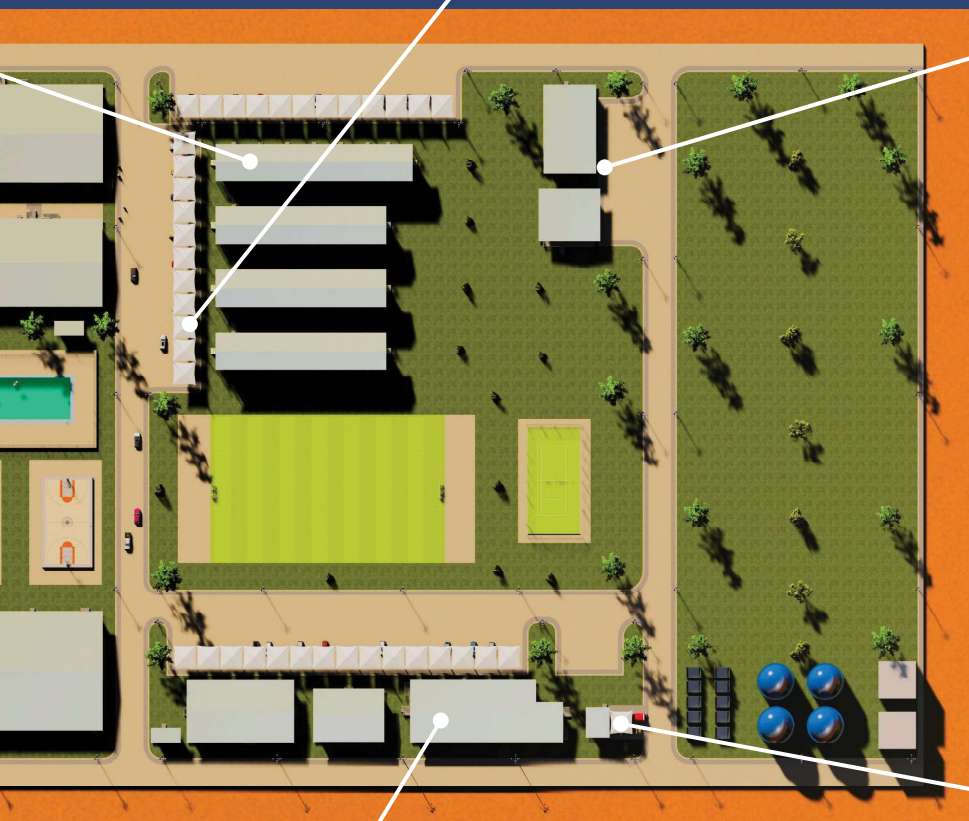
In-house Design Service



Our Technical office is not only staffed with AutoCAD/Revit operators, it is also staffed by experienced designers and engineers with a wealth of experience in designing turnkey facilities or customized buildings to suit our client's requirements, in a wide range of geographical areas.

Our designers and engineers are not only aware of the capital costs of the facilities, with the aim of helping our clients achieve an economical solution.





Our design team will consider the following:

- The geographical area and access of the location.
- Yearly weather patterns.
- Availability of water and electricity.
- Availability for the discharge facilities for wastewater.
- Life support facility requirements.
- The security and welfare of the camp occupants by working to national and regional welfare and HSE standards



Manufacturing Facilities



Ark Prefab's two manufacturing facilities use IMS (Intelligent Manufacturing Systems) which is a system that integrates the abilities of the workforce, machines and process to achieve the best possible manufacturing outcome.

Our vision is to be one of the leading designers and manufacturers of modular buildings and to be known for our operational performance based on Quality, Reliability, Value and Cost. Underpinned by an excellent customer service.

Ark Prefab is a global supplier, so various requirements and standards have to be met for different regions and countries, and at Ark Prefab we meet these certifications such as: SSA (Australia), PSE (Japan), CSA (Canada), SABS (South Africa), CE (Europe) and UL (United States of America)

Ark Prefab's Modular units have been certified as one-hour resistant to fire and Certificate of Compliance has been issued by INTERTEK, USA.



Delivery, Transportation and Logistics



We pride ourselves in making deliveries on time and in line with our client's schedule, and we apply a risk management procedure to ensure we are aware of International and regional event's which may hinder or delay shipments, and if we are made aware of any forthcoming problems we will immediately discuss with our clients the best solution to help mitigate the problem.

Our two manufacturing facilities enable us to meet our clients demanding delivery schedules with the production capacity of 2,500 standard units per month in a single shift.

Ark Prefab's standard modular units are designed with ISO shipping corner cast which makes them ready for transportation and lifting. The flat pack bundles are the same size as 20 feet ISO shipping container, meaning they can be shipped on regular container vessels





CONTACT US

Head Office

Address: RM.701,Block A No.581 Xiuchuan Road
Pudong, Shanghai, China
Phone: +86 21 60838082
Fax: +86 21 6083 8081
Email: info@arkprefab.com

Hong Kong

Address: Unit 1105, 11F., Lippo Centre Tower 1,
89 Queensway, Admiralty, Hong Kong
Phone: +852 58049088
Fax: +852 58049088 ext.555

Australia

Ark Pacific
P.O. Box 2140
Address: Burleigh Waters, Queensland 4220, Australia
Phone: +61 478 683 781
Email: info@arkpacific.net

Middle East & Africa

Ark Prefab Global
P.O. Box 16176
Doha, Qatar
Phone: +974 44696823 / 30305662
Email: arkme@arkprefab.com



www.arkprefab.com

